

CASH MANAGEMENT TECHNOLOGIES



Astute Solutions: *For real business benefits*

BANKING AND FINANCE

RETAIL OUTLETS

FAST FOOD RESTAURANTS

SCHOOLS AND COLLEGES

LEISURE CENTERS

CONVENIENCE STORES

THEME PARKS

RESTAURANTS

DIY OUTLETS

PUBS AND CLUBS

CASINOS

BAKERIES

THEATERS AND CINEMAS

CHARITIES

SPORTS STADIUMS

PUBLIC SECTOR

CAR PARKS

PHARMACIES

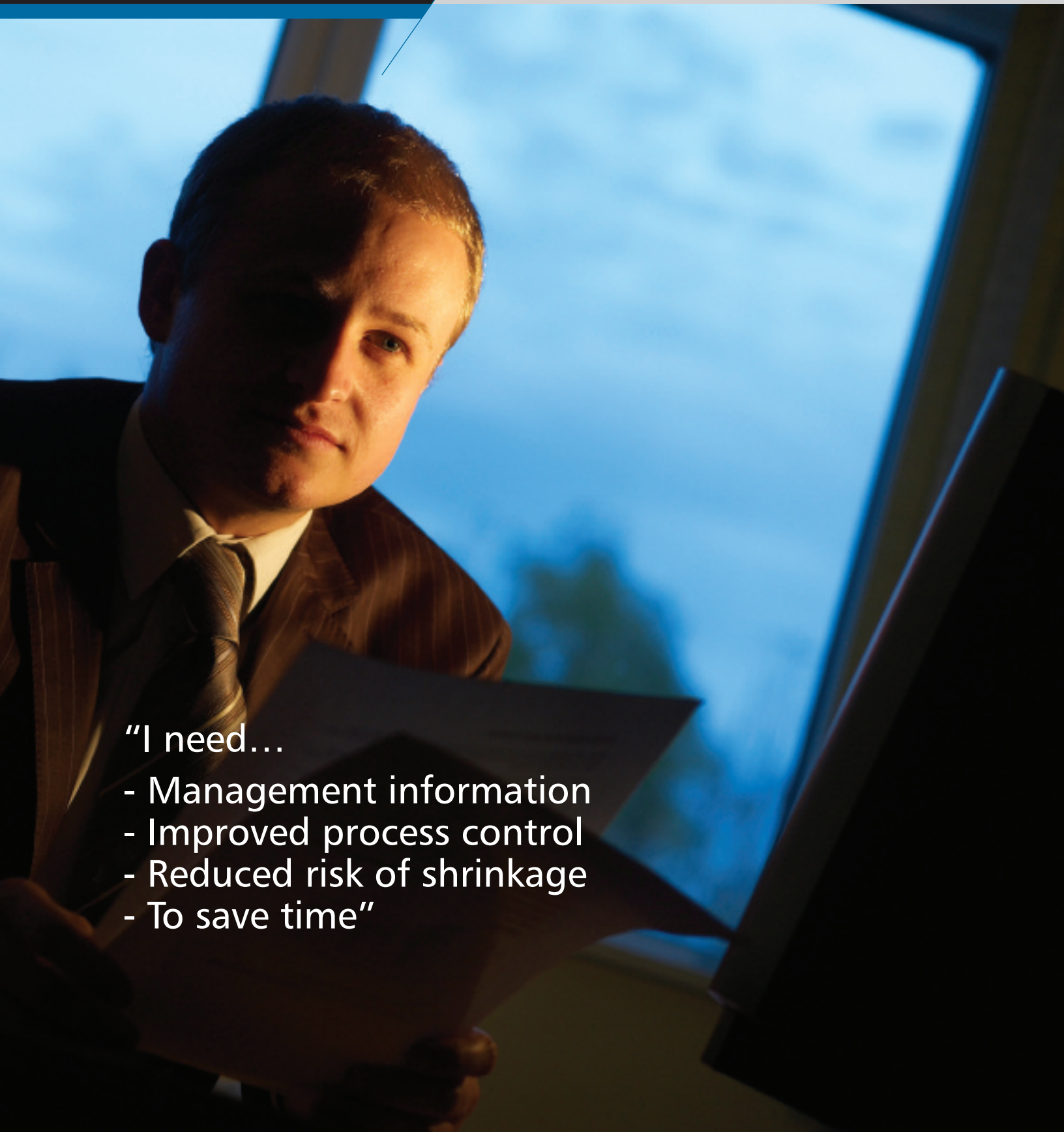
PUBLIC TRANSPORT

SERVICE STATIONS

CATERING

MUSEUMS

 **Tellermate**
Integrated and Intelligent
Cash Management Technologies



"I need..."

- Management information
- Improved process control
- Reduced risk of shrinkage
- To save time"

Strategic cash management solutions

Cash management technologies which transform your business

- CONSULTATIVE APPROACH
- EXPERT KNOWLEDGE
- OUTSTANDING SERVICE
- GLOBAL CLIENTS
- INTELLIGENT TECHNOLOGY
- LOSS PREVENTION
- MANAGEMENT INFORMATION
- SEAMLESS INTEGRATION

TODAY'S BUSINESSES WANT CASH MANAGEMENT SYSTEMS THAT DELIVER FAR MORE THAN PURE FUNCTION. THROUGH OUR CONSULTATIVE APPROACH, EXPERT KNOWLEDGE AND OUTSTANDING SERVICE, OUR GLOBAL PORTFOLIO OF CLIENTS BENEFIT FROM OUR ABILITY TO RESOLVE THEIR SPECIFIC CHALLENGES AND IMPROVE THEIR PROFITABILITY.

Companies across the world have been putting their trust in us for nearly 30 years, benefiting from forward-thinking intelligent technology, customized best-in-class products and invaluable guidance from a wide spectrum of professional teams. What we achieve for our clients are vital accuracy, time and cost-savings, loss prevention, precision auditing, real-time management information and seamless process integration. Consequently, our clients across the retail, financial and food service sectors rely on our expertise, first-rate systems and long-term experience to deliver best practice cash management.

Based in the UK, and with worldwide operations, we partner with global organizations including H&M, Disney, Apple, HSBC, McDonald's and Aldi; providing top quality services and products that visibly enhance operations.



 **Tellermate**
Integrated and Intelligent
Cash Management Technologies

Banking and finance demand accuracy without compromise

Efficiency and reliability for you and your customers

IT IS VITAL IN THE FINANCIAL INDUSTRY FOR BANKING STAFF TO VERIFY CASH WHILE INTERACTING WITH CUSTOMERS AND FOR MANAGERS TO HAVE REAL-TIME INFORMATION ON BRANCH-WIDE CASH LEVELS. OUR COMPACT, YET ROBUST CASH MANAGEMENT PRODUCTS HAVE A SMALL FOOTPRINT AT THE COUNTER AND PERFORM RELIABLY WHEREVER THEY ARE USED. TELLERMATE MACHINES ARE IDEAL FOR COUNTER USE DUE TO A 15 HOUR BATTERY LIFE, CAPACITY TO COUNT LARGE QUANTITIES OF BILLS AND COIN QUICKLY AND RESISTANCE TO SURROUNDING ENVIRONMENT CONDITIONS.

Non-invasive connectivity to a printer or PC for a full audit trail means that our products work independently. Since no software needs to be installed and no system changes are required, clients are able to take full advantage of all functions without compromising their IT security. With up to three currencies available in one unit, multiple currencies can be smoothly managed. In addition, service packages can provide software updates to accommodate for currency changeovers so that products continue to perform throughout their lifetime. To ensure optimum efficiency and business continuity, we provide a telephone helpline, fast-fault resolution and a swap-out service. Where required, we can also hold stock and assist with asset-tracking to keep you up to date on the equipment you own and where it's based.



"We firmly believe that there will always be a need for cash in society, and we know that we can rely on Tellermate's cash management performance to ensure confident staff and satisfied customers."

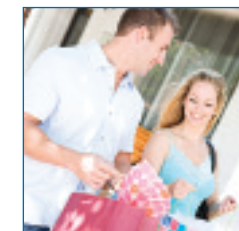
Retail needs tight management and security

Information, speed and discreet operation

TELLERMATE'S UPLOADABLE, REAL-TIME DATA PROVIDES CLEAR AND CENTRALIZED MANAGEMENT INFORMATION ON ITEMS SUCH AS STORE CASH LEVELS, CASH INTAKE TRENDS AND ADHERENCE TO CASH-CONTROL PROCESSES AND DISCREPANCIES. INCREASED CONNECTIVITY OPTIONS ALLOW DATA TO BE EASILY STORED, COMPARED AND ANALYZED. IN ADDITION, NEW COUNT MODES MAKE PROVISIONS FOR EVOLVING RETAIL OFFERINGS SUCH AS SELF-SERVICE CHECK OUTS.

Tellermate products achieve quick till counts that save valuable time at the end of a shift, during spot-checks, verifying change disputes or while performing cash removals. This high-speed capability minimizes customer queue times and ensures tills are not closed for lengthy periods. Units also help guard against theft at the point of sale, with a discreet design to help ensure good customer relations. Till reconciliation can be carried out on a back-office PC; further reducing fraud opportunities for counter staff.

"Installing Tellermate has radically improved and simplified our cash management, and has increased cash reconciliation speed and accuracy. Cash is better consolidated and the power of integration has given us cash visibility and audit ability."



- FRONT COUNTER OPERATION
- HIGH CAPACITY
- NON-INVASIVE CONNECTIVITY
- MULTI CURRENCY
- MONITOR CHANGE LEVELS
- IDENTIFY DISCREPANCIES
- MANAGE CASH BUILD UP
- SWIFT SHIFT CHANGES

Food retailers and wholesalers need diverse control

Solving multi-area and high volume challenges

ASTUTE MANAGEMENT CONTROL IS REQUIRED IN FOOD RETAIL WHERE THERE ARE HIGH QUANTITIES OF CASH INTAKE AND A LARGE NUMBER OF TILLS ACROSS MULTIPLE AREAS OF SERVICE. WITH MULTI-TILL MEMORY FOR UP TO 150 TILLS AND RELIABLE CONNECTIVITY, OUR NETWORKED TELLERMATE SOLUTIONS ENABLE THE VAST QUANTITY OF STORE-WIDE DATA TO BE READILY UPLOADED TO A PC FOR ANALYSIS AND REPORTING. THIS CAN THEN BE CARRIED OUT AT A CENTRAL HQ OR FINANCE DEPARTMENT, REDUCING TIME-CONSUMING OR DELAYED SITE REPORTING.

Along with multi-till memory, Tellermate products are equipped with up to four different count tasks to cope with multiple administrative processes. Machine portability allows for spot-check audits or the ability to perform drawer skims. This data can then be stored for immediate print-out or for downloading to PC upon return to the back office. In addition, a large number of float options can be tailored to specific client methodologies or departments such as 'customer service' or 'pharmacy'.



"Tellermate systems are so simple to operate that our staff feel comfortable using them after only a brief demonstration. Beyond this, with Tellermate print-outs we now have complete accountability, security and cash control."

Quick service restaurants need flexibility and simplicity

Efficiency and security in a fast-paced environment

IN A DEMANDING, MULTI-SHIFT ENVIRONMENT WHERE A LARGE AMOUNT OF CASH IS HANDLED DURING LONG WORKING DAYS, COUNTING NEEDS TO BE QUICK, PRECISE AND EASILY AUDITABLE. OUR CASH MANAGEMENT UNITS COUNT A TILL DRAWER AND RESET A FLOAT IN UNDER A MINUTE, PROVIDING FASTER AND TIGHTER CONTROL AS WELL AS EFFICIENT AND ACCURATE SHIFT CHANGES. IN ADDITION, MACHINE PORTABILITY ALLOWS STAFF TO QUICKLY PERFORM SPOT-CHECK AUDITS.

The advanced design of the Tellermate machine allows for resistance to surrounding environment conditions. For example, the liquid-resistant keypad minimizes the damage from accidental spills that would normally result in machine downtime. User-friendly and intuitive software allow for simple training of new staff; ideal for an industry where high employee turnover is prevalent. Printer links enable report production for complete accountability through paper audit trails. The units are also customizable to fit customers' terminology and processes so that the system can be consistently replicated throughout corporate and franchise locations worldwide.

"Tellermate is used to prepare till floats, spot-check tills, close the tills down and eliminate errors. It allows us to quickly count and record all of our tills for each of our cashiers, and has reduced the time spent managing tills by a factor of three."



- 150 TILL MEMORY
- NETWORKED CONNECTIVITY
- REAL-TIME INFORMATION
- HIGHLY CUSTOMIZABLE
- SWIFT SHIFT CHANGES
- ROBUST TECHNOLOGY
- SIMPLE TO USE
- ACCOUNTABILITY

Innovation where you need it

A new range of products for smooth operational solutions

OUR NEW T-i^x RANGE BUILDS ON THE HIGH PERFORMANCE OF ALL OUR PRODUCTS WITH THE ADDITION OF CLEVER ENHANCEMENTS THAT INCREASE BUSINESS EFFICIENCIES. PRESERVING OUR TRADEMARK FEATURES - TAILORED DESIGN AND SERVICE, COMPATIBILITY WITH YOUR CURRENT SYSTEMS, A COMPACT FOOTPRINT AND ROBUST, LIGHTWEIGHT DESIGN - T-i^x PROVIDES INVALUABLE SOLUTIONS FOR TODAY'S CASH MANAGEMENT CHALLENGES.

FASTER COUNTING: New money platform for reduced interference and full weight limit utilization. Reduced vibration for quicker value display.

MINIMAL EXTERNAL INTERFERENCE: Filters to ensure minimal environmental count disruption, such as from air conditioning, and an alert when poor environmental conditions could compromise count results.

HIGH CAPACITY: The money platform's long back holds more bills, and facilitates faster bill stacking. A flip down tray with non-slip coating allows for faster coin counting.

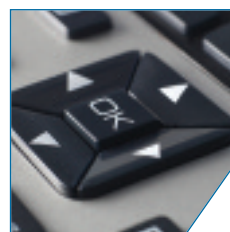
ENHANCED CUSTOMIZATION: Software structure and terminology customized to meet individual business needs. Customization can be ongoing, providing solutions for future needs.

USER-FRIENDLY DESIGN: At a glance screen layout with both text and graphics. Clear instructions and menu structure.

IMPROVED DIAGNOSTICS: Easy to follow set-up wizard and changeable PIN protection level. Faster remote problem identification and battery status monitor flags when battery needs recharging or replacing.

ENHANCED PORTABILITY: Underside right or left-handed finger grips for safe and convenient carrying. Small, light-weight 15-hour life battery that is trickle-chargeable when connected to PC USB.

LONG-TERM INVESTMENT: Designed to high quality standards to ensure a long working life. Easy to update via USB and available with a comprehensive service package.



"Over 2 years of research and development have been invested to produce a range that meets customer requirements now and has the potential to continue to grow and develop with our customers in the future. Customer focus is at the heart of Tellermate and this is where the design of T-i^x is rooted."



LARGE DISPLAY: Large, high resolution backlit display enables the use of larger text and clear icons. Screen layout is ergonomically designed for quick and easy operation.

INSTINCTIVE MENU STRUCTURE: Addition of a 'Home' key for fast, main menu access, header text and scroll bars for clear navigation.

SOPHISTICATED COMMUNICATIONS: A range of connectivity options provide flexible and comprehensive solutions for all application needs.

DAMAGE-RESISTANT DESIGN: Designed for durability, the unique and robust features of the T-i^x reduce damage through impact. Liquid-resistant key mat and drainage lines minimize effects of accidental liquid spills.

INTEGRATED KEYPAD: Front of unit keypad integration for quick data entry. Soft touch design key caps for reduced vulnerability to damage.

INTUITIVE DESIGN: The large display combines with the familiar navigation keys and user software to provide an intuitive, easy to operate user interface.



Responsive unique and trusted Support

After sales service to keep your business flowing

OUR SOLUTIONS ARE BASED ON TOP-QUALITY PRODUCTS, DESIGNED AND MANUFACTURED IN GREAT BRITAIN. YOUR TELLERMATE EXPERIENCE GOES FAR BEYOND THE SUPPLY OF EQUIPMENT. FOR MANY YEARS, OUR CLIENTS HAVE MAXIMIZED THEIR INVESTMENTS THROUGH OUR INDUSTRY LEADING AFTER-SALES SUPPORT.

Tellermate's exceptional and comprehensive after-sales service gives our clients a highly competent, multi-lingual support service, both on the telephone and via the internet.

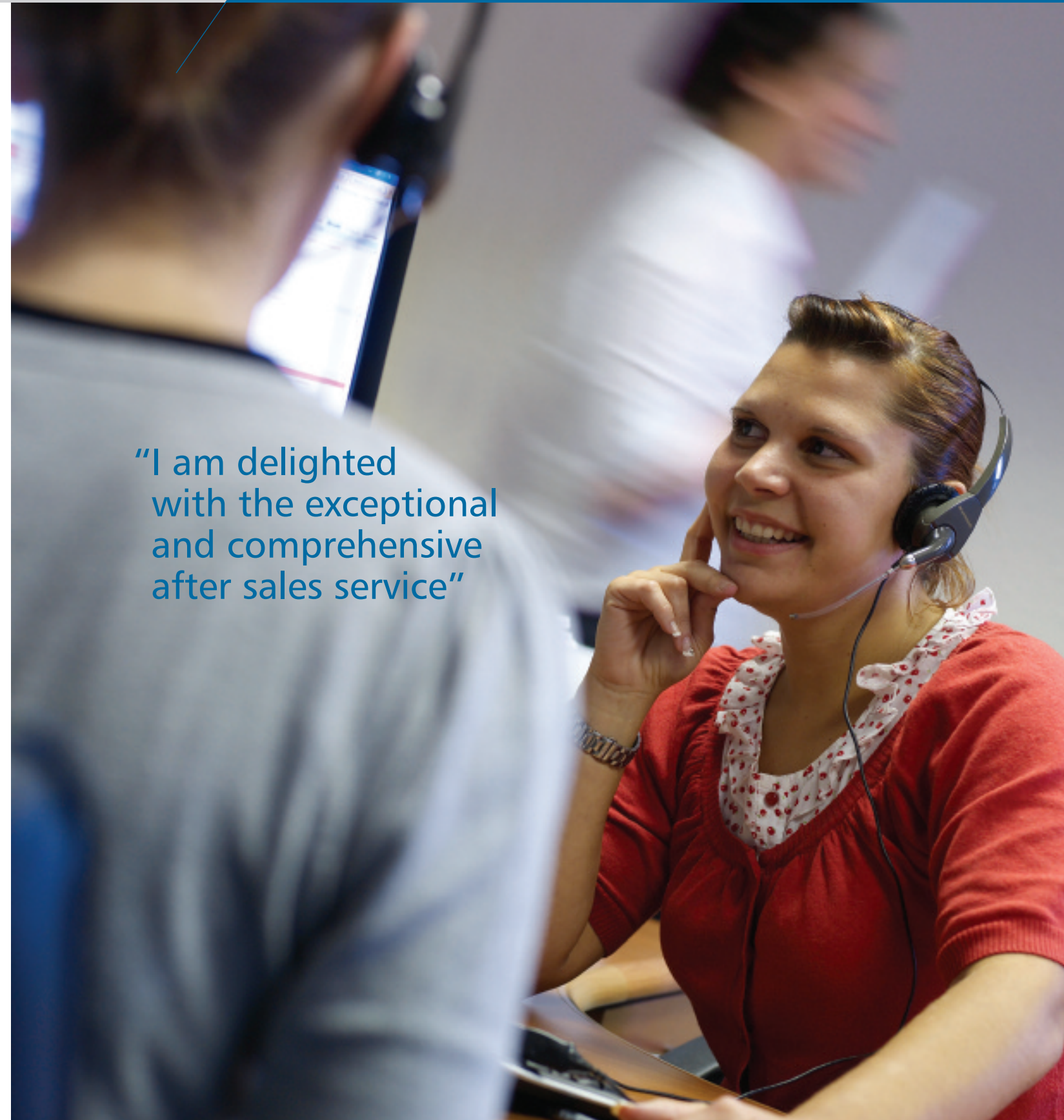
Whatever business you are in, continuity in cash management process control is essential, and making sure you are confident that issues will be resolved promptly is an absolute priority. Our dedication to after-sales service through our extended warranty ensures that...

- Customer inquiries are dealt with immediately by a product specialist with local language skills and market knowledge
- All customer employees have full access to helpdesk support, including troubleshooting and telephone-based training
- Faulty equipment exchange program to minimize downtime
- Upgrades to accommodate currency changes ensure products have a future proof lifespan

We design and manufacture all our products to ISO 9001:2008 quality standards, and supply a five-year manufacturer's warranty. We also provide additional service support through a first-rate comprehensive estate maintenance program, and keep in contact with our customers so that we can work with them if there are changes to their environment or processes.



"I am delighted with the exceptional and comprehensive after sales service"



Tellermate.com

Tellermate Inc.

1080 Holcomb Bridge Road
Building 100, Suite 350
Roswell, GA 30076
USA

Tel: 770 220 0930
Fax: 770 220 0970
Email: info@tellermate-us.com

Tellermate UK

Leeway House, Leeway Industrial Estate,
Newport NP19 4SL, Great Britain

Tel: +44 (0)1633 637 100
Fax: +44 (0)1633 283 100
Email: sales.uk@tellermate.com

Tellermate Europe

117 avenue Victor Hugo,
92100 Boulogne Billancourt, France

Tel: +33 (0)170 96 00 41/2
Fax: +33 (0)170 96 00 43
Email: sales.fr@tellermate.com

Tellermate Germany

Waldhofer Str. 102, D-69123,
Heidelberg, Germany

Tel: +49 (0)7071 365 879
Fax: +49 (0)7071 365 880
Email: sales.de@tellermate.com

Tellermate Spain

C/ Aragón, 308, 1º-2º,
08009 - Barcelona, Spain

Tel: +34 93 204 5810
Fax: +34 93 488 1053
Email: info.es@tellermate.com

